

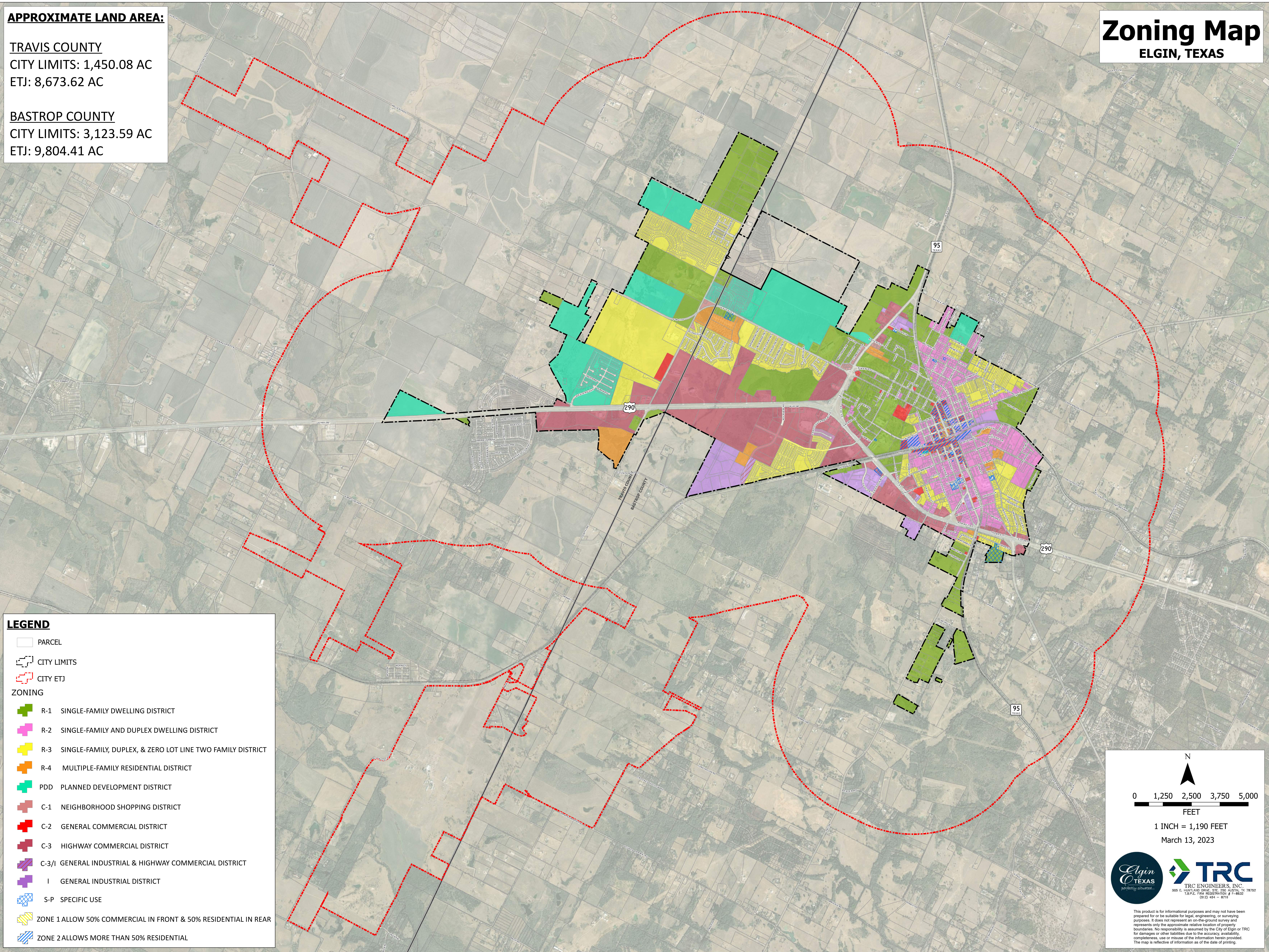
**APPROXIMATE LAND AREA:**

**TRAVIS COUNTY**  
CITY LIMITS: 1,450.08 AC  
ETJ: 8,673.62 AC

**BASTROP COUNTY**  
CITY LIMITS: 3,123.59 AC  
ETJ: 9,804.41 AC

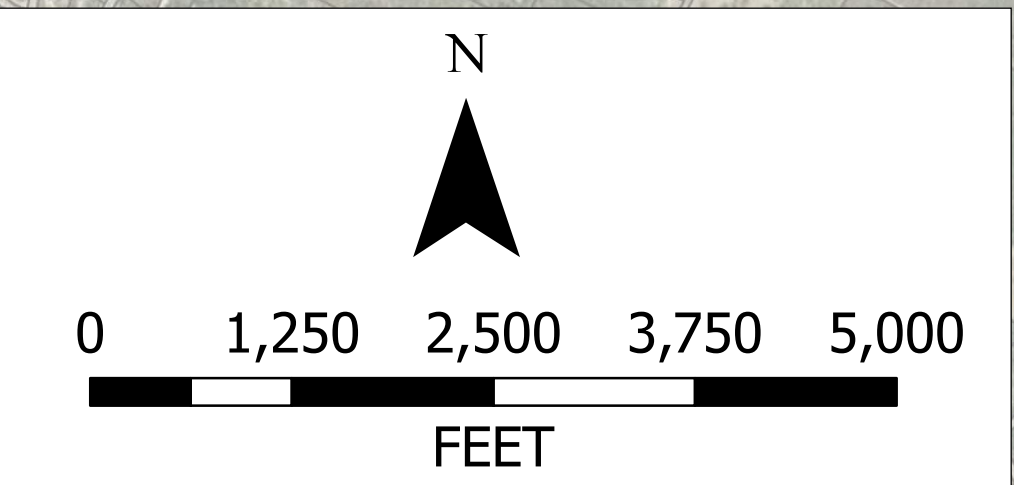
# Zoning Map

ELGIN, TEXAS



**LEGEND**

-  PARCEL
-  CITY LIMITS
-  CITY ETJ
- ZONING**
-  R-1 SINGLE-FAMILY DWELLING DISTRICT
-  R-2 SINGLE-FAMILY AND DUPLEX DWELLING DISTRICT
-  R-3 SINGLE-FAMILY, DUPLEX, & ZERO LOT LINE TWO FAMILY DISTRICT
-  R-4 MULTIPLE-FAMILY RESIDENTIAL DISTRICT
-  PDD PLANNED DEVELOPMENT DISTRICT
-  C-1 NEIGHBORHOOD SHOPPING DISTRICT
-  C-2 GENERAL COMMERCIAL DISTRICT
-  C-3 HIGHWAY COMMERCIAL DISTRICT
-  C-3/I GENERAL INDUSTRIAL & HIGHWAY COMMERCIAL DISTRICT
-  I GENERAL INDUSTRIAL DISTRICT
-  S-P SPECIFIC USE
-  ZONE 1 ALLOW 50% COMMERCIAL IN FRONT & 50% RESIDENTIAL IN REAR
-  ZONE 2 ALLOWS MORE THAN 50% RESIDENTIAL



1 INCH = 1,190 FEET  
March 13, 2023



This product is for informational purposes and may not have been prepared for or be suitable for legal, engineering, or surveying purposes. It does not represent an on-the-ground survey and represents only the approximate relative location of property boundaries. No responsibility is assumed by the City of Elgin or TRC for damages or other liabilities due to the accuracy, availability, completeness, use or misuse of the information herein provided. The map is reflective of information as of the date of printing.